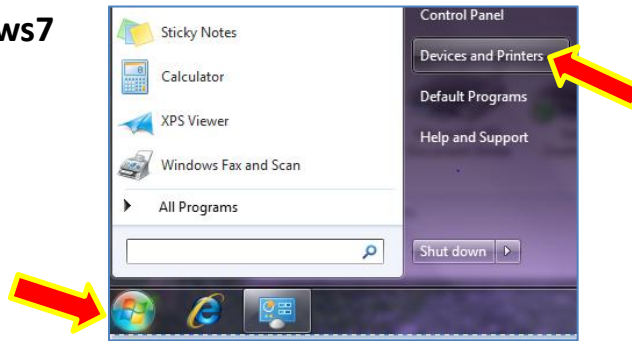


Add a Network Printer in Windows7

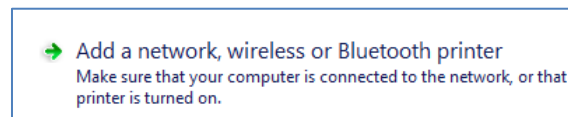
1. Click on the START button,
2. select DEVICES AND PRINTERS



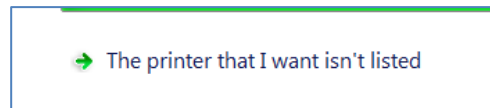
3. click ADD A PRINTER



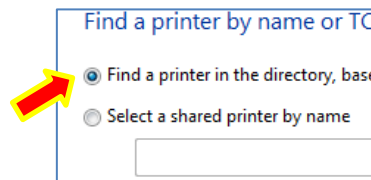
4. Click ADD A NETWORK PRINTER



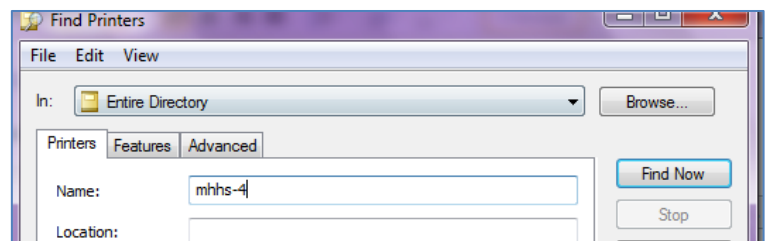
5. Click THE PRINTER ...WASN'T LISTED



6. Click FIND A PRINTER...



7. In the NAME field, Type MHHS- (the more characters you type, the more you will narrow down the search, but if you are too specific, you may not find it, so I usually just type the 1st number of the building)



8. Click FIND NOW
9. Double click your printer in the list.

